

EUROPE FILTERS - Liquid Filter Systems

Bag Filter Housings

Single and multi-bag filter housings
in high quality stainless steel
Suitable for all commonly used filter bags
Flow rates max. 160m³/hr

Details page 3-10



Filter Bags

High quality needlefelt or nylon monofilament bags
Steel, zinc plated top collar ring
4 different sizes - max. 0.5 m² filter surface per bag
Suitable for all commonly used filter housings

Details page 11-12

Cartridge Filter Housings

Single and multi-cartridge filter housings
1 to 5 cartridges per housing (9³/₄" - 30" length)
High quality stainless steel and polypropylene
Suitable for all commonly used filter cartridges

Details page 13 -16



Filter Cartridges

Industrial filter cartridges
4 different types:
String wound, phenolic resin bonded, melt-blown,
extruded activated carbon
Sizes 9 ³/₄" to 40" length
Suitable for all commonly used filter housings

Details page 17 - 18

EUROPE FILTERS - Liquid Filter Systems

Bag Filter Housings

Wide range of stainless steel bag filter housings
Compatible with all types of commonly used filter bags
Filter housings containing 1-4 filter bags (max flow of 160m³/hr)
Economical stainless steel alternative to carbon steel housings guarantees years of consistent performance



SIE Side Inlet Economy

The economical series of light weight construction

Page...4



TOT Top Inlet

Over the top inlet highest quality and precision

Page...6



SIF Side Inlet Flow

Side inlet, high precision

Page...5

TIM Top Inlet Multibag

High flow rate with over the top inlet, multi-bag unit

Page...7



Various Accessories and Spare Parts

To optimize the filter operation

Page...9/10



SIP

For aggressive filter media, the perfect polypropylene filter

Page...8

EUROPE FILTERS - Liquid Filter Systems

Bag Filter Housings SIE-Series

The economical series of light weight construction

Throughput 6-40 m³/hr

Economic stainless steel housing that outlast carbon steel housings

For inline safety filtration and OEM applications

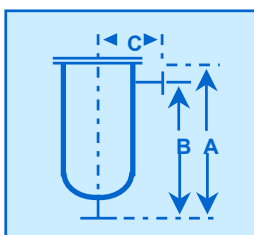
Easy to operate, V-clamp closure



EUROPE FILTERS
SIE-1-01/02-S-6

SIE-Series (20-40 m³/hr) material SS 316 - 1.4571

Bag size	Material	Max. work. pressure (bar)/temperature
01 and 02	S	6/120°C



	Size 01	Size 02
m ² /bag	0.25	0.5
m ³ /hour	20	40
Dimensions: A (in mm)	575	970
B	505	900
C	160	160
Connections: inlet / outlet vent	2" BSP 1/4" BSP	2" BSP 1/4" BSP

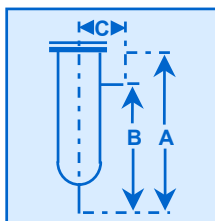
Spare Parts	Material
Restrainer basket	SS 316 mesh
V-clamp	SS 316
Gaskets	NBR, FPM, EPDM
Bag hold down ring	SS 316



EUROPE FILTERS
SIE-1-03/04-S-9

SIE-Series (6-12 m³/hr) material SS 316 - 1.4571

Bag size	Material	Max. work. pressure (bar)/temperature
03 and 04	S	9/ 120°C



	Size 03	Size 04
m ² /bag	0.09	0.18
m ³ /hour	6	12
Dimensions: A (in mm)	344	499
B	294	449
C	110	110
Connections: inlet / outlet vent	1 1/2" BSP 1/4" BSP	1 1/2" BSP 1/4" BSP

Spare Parts	Material
Restrainer basket	SS 316 mesh
V-clamp	SS 316
Gaskets	NBR, FPM, EPDM
Bag hold down ring	SS 316

EUROPE FILTERS - Liquid Filter Systems

Bag Filter Housing SIF-Series

Side inlet, high precision

For heavy industrial and OEM applications for flow rates up to 40 m³/hr

Hinged lid SS 316 (1.4571) filter

Easy to operate and quick bag changes - 4 swing eye bolts

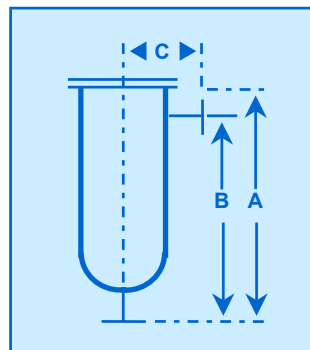
Easy to clean - smooth surface

SIF-Series (20-40 m³/hr) material SS 316 - 1.4571



EUROPE FILTERS SIF-1-01/02-S-10

Bag size	Material	Max. work. pressure (bar)/temperature
01 and 02	S	10/120°C



	Size 01	Size 02
m ² /bag	0.25	0.5
m ³ /hour	20	40
Dimensions: A (in mm)	575	970
B	495	890
C	220	220
Connections:		
inlet / outlet	2" BSP	2" BSP
vent	1/4" BSP	1/4" BSP

Spare Parts	Material
Restrainer basket	SS 316 mesh
Swing-eyebolt set	Steel / zinc plated
Gaskets	NBR, FPM, EPDM
Bag hold down ring	SS 316

EUROPE FILTERS - Liquid Filter Systems

Bag Filter Housing TOT-Series

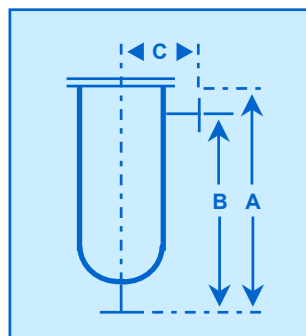
Over the top entry SS 316 housing highest quality and precision
 Low pressure drop
 No by-pass of particles with best filtration results
 Easy to operate and quick bag change - 4 swing eye bolts
 Easy to clean - smooth surface

TOT-Series (20-40 m³/hr) material SS 316 - 1.4571



EUROPE FILTERS TOT-1-01/02-S-10

Bag size	Material	Max. work. pressure (bar)/temperature
01 and 02	S	10/160°C



	Size 01	Size 02
m ² /bag	0.25	0.5
m ³ /hour	20	40
Dimensions: A (in mm)	441	836
B	331	726
C	307	307
Connections: inlet / outlet vent	DN 50/PN16 DIN 2633 1/4" BSP	DN 50/PN16 DIN 2633 1/4" BSP

Spare Parts	Material
Restrainer basket	SS 316 mesh
Swing-eyebolt sets	Steel / zinc plated
Gaskets	NBR, FPM, EPDM, FEP
Leg assembly	SS 304

EUROPE FILTERS - Liquid Filter Systems

Multi Bag Filter Housing TIM-Series

High flow rates up to 160 m³/hr with over the top inlet
 Split lid hinged SS 304 filter housing
 4 bags per housing in size 01 and 02
 For heavy industrial and OEM applications

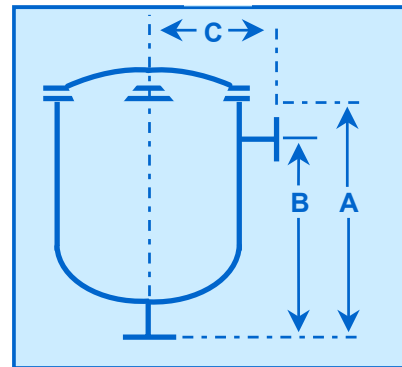
TIM-Series (80-160 m³/hr)

2 m² total surface area



EUROPE FILTERS TIM-4-01/02-E-6

Bag size	Material	Max. work. pressure (bar)/temperature
01 and 02	E	6/120°C



	Size 01	Size 02
m ² /bag	0.25	0.5
m ³ /hour	80	160
Dimensions: A (in mm)	474	874
B	246	622
C	355	355
Connections:		
inlet / outlet	DN 100 DIN 2633	DN 125 DIN 2633
vent	1/4" BSP	1/4" BSP

Spare Parts	Material
Restrainer basket	SS 316 mesh
Swing-eyebolt set	Steel / zinc plated
Gaskets	NBR, FPM , EPDM

EUROPE FILTERS - Liquid Filter Systems

Bag Filter Housing Accessories

Well designed EUROPE FILTERS accessories to optimize the filter operation

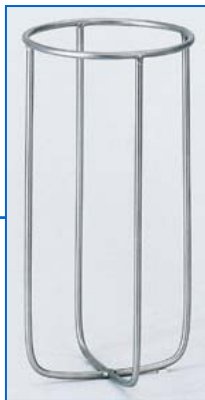
Vent Valve 1/4"



Pressure Gauge 1/4"



Bag Positioner



Bag Positioner with Magnets

Evacuation Balloon



EUROPE FILTERS - Liquid Filter Systems

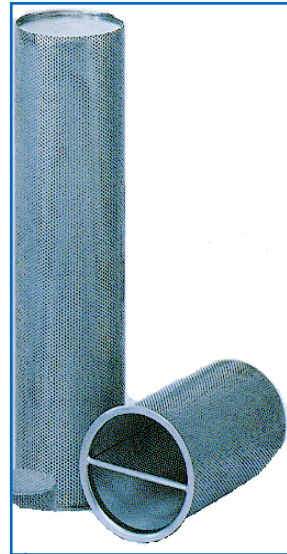
Bag Filter Housing Accessories



Restrainer Basket



Wall Mounting Brackets



Mesh-Strainer



Leg Assemblies

EUROPE FILTERS - Liquid Filter Systems

Filter Bags

Steel, zinc plated, top collar ring
 Easy installation and secure sealing
 Felt material - polyester and polypropylene from 1-200 μ
 Mesh material - nylon monofilament from 50-800 μ
 4 different sizes - 0.09 to 0.5 m² filtration surface



RINGSEAL

Filter Bag

R - PO - 50 - 02

Filter Media/Material

PO = Polypropylene needlefelt
 PE = Polyester needlefelt
 NMO = Nylon monofilament mesh

Filter Bag Size

Code	Surface (m ²)	Size (cm)
03	0.09	ø 10 x 24
04	0.16	ø 10 x 40
01	0.25	ø 18 x 43
02	0.50	ø 18 x 80

Filter Fineness in Micron

Material	1	5	10	25	50	80	100	125	150	200	400	600	800
PO	x	x	x	x	x		x			x			
PE	x	x	x	x	x		x			x			
NMO					x	x	x	x	x	x	x	x	x

Notes:

Max. flow rate for different sizes of filter bags at 1cp and 0,07 bar diff. pressure

SIZE 03 6 m³ / hr
 SIZE 04 12 m³ / hr
 SIZE 01 20 m³ / hr
 SIZE 02 40 m³ / hr

EUROPE FILTERS - Liquid Filter Systems

Filter Bags

Plastic top collar ring ALL WELDED CONSTRUCTION
 Easy installation and best possible sealing
 Felt material - polyester and polypropylene from 1-200 μ
 2 different sizes - 0.25 and 0.50 m² filtration surface



UNIFIT

Filter Bag

U - PO - 50 - 02

Filter Media/Material

PO = Polypropylene needlefelt

PE = Polyester needlefelt

Filter Bag Size

Code	Surface m ²	Size (cm)
01	0.25	ø 18 x 43
02	0.50	ø 18 x 80

Filter Fineness in Micron

Material	1	5	10	25	50	100	200
PO	x	x	x	x	x	x	x
PE	x	x	x	x	x	x	x

Notes:

Max. flow rate for different sizes of filter bags at 1cp and 0,07 bar diff. pressure

SIZE 01 20 m³ / hr

SIZE 02 40 m³ / hr

EUROPE FILTERS - Liquid Filter Systems

Cartridge Filter Housings



SCF/P

Single cartridge
Polypropylene housing
[Page...14](#)

SCF/E

Single cartridge
Light weight stainless steel housing
[Page...15](#)



MCF/E

Multi cartridge
Light weight stainless steel housing
[Page...16](#)

EUROPE FILTERS - Liquid Filter Systems

Cartridge Filter Housings

SCF/P-Series (1-2 m³/h) material Polypropylene
Single cartridge polypropylene filter housing

Easy installation into pipe lines, 3/4" female BSP threaded inlet/outlet
Suitable for DOE (double open ended) cartridges 9³/₄" and 20" length
Ideal for water filtration and OEM-use

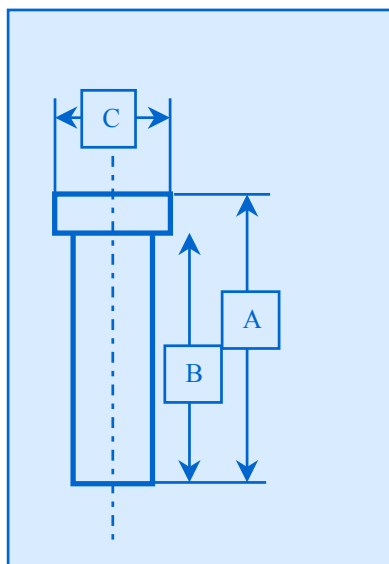


SCF - 1 - 20 - P

no. cartridges	length of cartridge	material of housing
1	9 ³ / ₄ "	P
1	20"	P

Technical Data

SCF	1-09-P	1-20-P
height (mm) A	305	565
diameter (mm) C	122	122
inlet/outlet (inch)	3/4"	3/4"
max. operating pressure (bar)	8.6	8.6
max. operating temp. (°C)	52	52
length of cartridge (mm) B	248	508
o-ring material	BUNA N	
weight of housing (kg)	0.8	2.0



Spare Parts and Accessories for Cartridge Filter housing SCF/P - Series

Spare Parts	Material
Wall mounting bracket	Coated metal
Wrench	Polypropylene
Gaskets	Buna N, FPM

EUROPE FILTERS - Liquid Filter Systems

Cartridge Filter Housings

SCF/E-Series (1-3 m³/h) material 1.4301/SS 304
Single cartridge stainless steel filter housing

Light weight construction, easy to operate central bolt closure
Economical cartridge filter housing
Inlet/outlet 1" female BSP threaded connection
Suitable for DOE (double open ended) cartridges 9³/₄" to 30" length

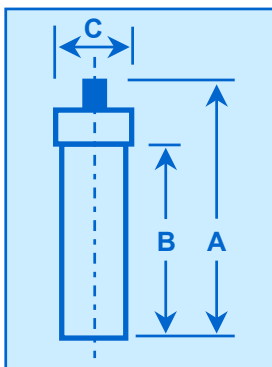


SCF - 1 - 20 - E

no. cartridges	length of cartridge	material of housing
1	9 ³ / ₄ "	stainless steel
1	20"	stainless steel
1	30"	stainless steel

Technical Data

SCF	1-09-E	1-20-E	1-30-E
height (mm) A	349	603	857
diameter (mm) C	105	105	105
inlet/outlet (inch)	1"	1"	1"
max. operating pressure (bar)	17.5	17.5	17.5
max. operating temp. (°C)	120	120	120
length of cartridge (mm) B	278	532	786
number of cartridges	1	1	1
flat gaskets material		BUNA N	
weight of housing (kg)	3.5	4.5	5.5



Spare Parts and Accessories for Cartridge Filter housing SCF-E-Series

Spare Parts	Material
Wall mounting bracket	SS 304
Gaskets	Buna N, FPM
Capnut	SS 304

EUROPE FILTERS - Liquid Filter Systems

Cartridge Filter Housings

MCF/E-Series (5-15 m³/h) material 1.4301/SS 304
Multi cartridge stainless steel filter housing

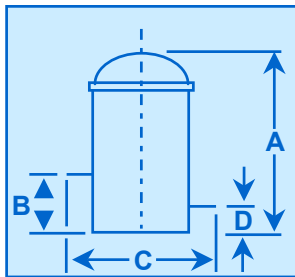
Light weight construction, easy to operate V-clamp closure
Economical cartridge filter housing
Inlet/outlet 2" female BSP threaded connection
Suitable for DOE (double open ended) cartridges 9³/₄" to 30" length



MCF - 520 - E

no. cartridges	length of cartridge	material of housing
5	9 ³ / ₄ "	stainless steel
5	20"	stainless steel
5	30"	stainless steel

Technical Data



MCF	509-E	520-E	530-E
height (mm) A	502	755	1010
diameter (mm) C	267	267	267
distance floor- inlet B	175	175	175
distance floor -outlet D	76	76	76
inlet/outlet (inch)	1.5"	1.5"	1.5"
max. operating pressure (bar)	8.8	8.8	8.8
max. operating temp. (°C)	120	120	120
length of cartridge (mm)	248	508	744
number of cartridges	5	5	5
o-ring material		BUNA N	
weight of housing (kg)	13	16	19

Spare Parts for Cartridge Filter housing MCF/E - Series

Spare Parts	Material
V-clamp	SS 304
Gaskets	Buna, FPM
Cartridge seat	SS 304
Center rod + spring cap	SS 304

EUROPE FILTERS - Liquid Filter Systems

Filter Cartridges

UFC/W-Series

String wound - versatile and low cost
 Polypropylene yarn depth filter element
 Polypropylene core, one piece construction
 Length of cartridges 9¾"-40"
 Nominal micron rating from 1-150 µm



UFC/W - 9 - P - P - 1

length of cartridge (inch)	material of yarn and core	nominal micron rate (µm)
9¾, 10, 19½, 20 29¼, 30, 39, 40	Poly- propylene	1, 3, 5, 10 25, 50, 75, 100, 150

UFC/R-Series

Phenolic resin bonded
 Acrylic - long staple fiber depth filter element
 Coreless, one piece construction
 Length of cartridge 9¾"-40"
 Nominal micron ratings from 2 -150 µm



UFC/R - 9 - A - 2

length of cartridge (inch)	material of fiber	nominal micron rate (µm)
9¾, 10, 19½, 20, 29¼, 30, 39, 40	Acryl	2, 5, 10, 25, 50, 75, 125, 150

EUROPE FILTERS - Liquid Filter Systems

Filter Cartridges

UFC/SP-Series

Melt-blown - excellent chemical resistance

Polypropylene fiber filter element

Coreless - free of binding agent

Length of cartridges 9³/₄"-40"

Nominal micron rating from 1-75 µm



UFC/SP - 9 - P - 1

length of cartridge (inch)	material of fiber	nominal micron rating (µm)
9 ³ / ₄ , 10, 19 ¹ / ₂ , 20, 29 ¹ / ₄ , 30, 39, 40	Polypropylene melt-blown	1, 3, 5, 10, 20, 30, 50, 75

UFC/A-Series

Extruded activated carbon - adsorption DOE filter element

Excellent adsorption capacity

Construction does not release activated carbon into the filtrate

Length of cartridge 9³/₄" - 30"

Micron ratings from 1 - 10 µm



UFC/A - 9 - E - 1

length of cartridge (inch)	material of filter element	nominal micron rate
9 ³ / ₄ , 20, 30	extruded activated carbon	1 = 1 µm 2 = 5 µm 3 = 10 µm

Process Data:

max. flow rate	8 l/min (each 10")
diff. pressure (clean)	0.05-0.1 bar
max. pressure drop	7 bar
max. operating temp.	52 °C

EUROPE FILTERS Zwaantjeslei, 18 BE-2170 Antwerpen

tel +32(0)3 644 32 22 – fax+32(0)3 644 32 12 - E-Mail info@europefilters.be

www.europefilters.be

Spare Parts	Material
Restrainer basket	Polypropylene
Bag hold down	Polypropylene
Gaskets	FPM , EPDM
Cartridge adapter kit	Polypropylene

